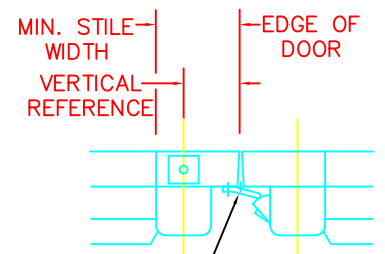
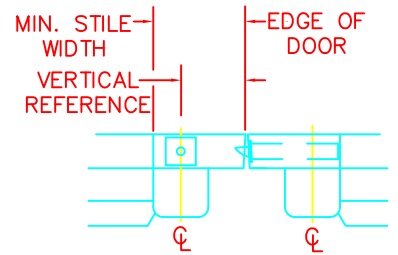
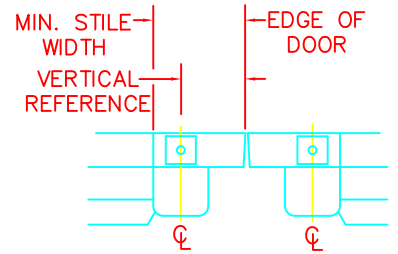
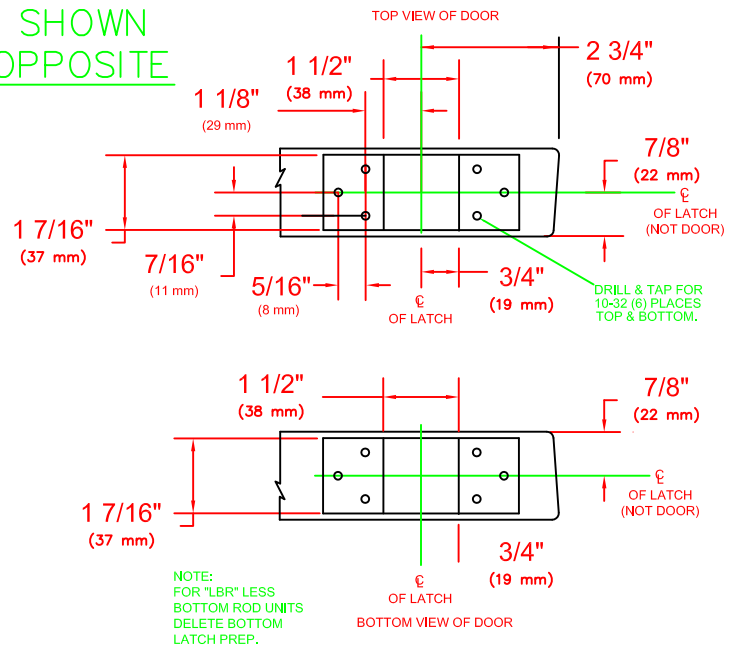
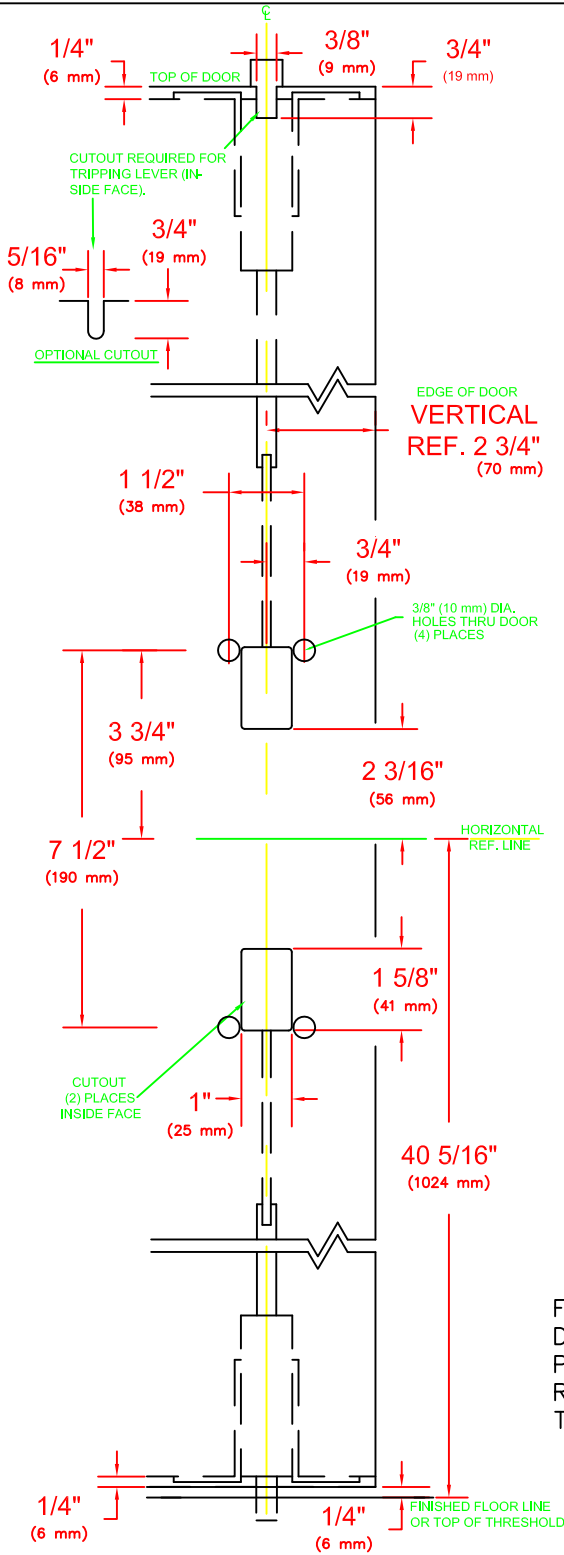


**RHR SHOWN  
LHR OPPOSITE**



OVERLAP STRIKE  
FOR 9300 SERIES MOUNTING LOCATION SEE APPROPRIATE 9300 TEMPLATES.

FOR LESS BOTTOM ROD (LBR) DEVICES, DELETE BOTTOM LATCH PREP. POPPER REQUIRED ON FIRE RATED DEVICE, SEE TEMPLATE T-4012.

**NOTES:**

1. SEE ADDITIONAL TRIM TEMPLATE WHEN REQUIRED.
2. DEVICE WILL COVER STANDARD SDI CUTOUT.
3. FOR SEX NUTS USE 3/8" DRILL.

|                    |                     |
|--------------------|---------------------|
| VERTICAL REFERENCE | MINIMUM STILE WIDTH |
| 2 3/4" (70 mm)     | 4 3/16" (106 mm)    |

REV. No. 3

REVISION: Lever Style Notes

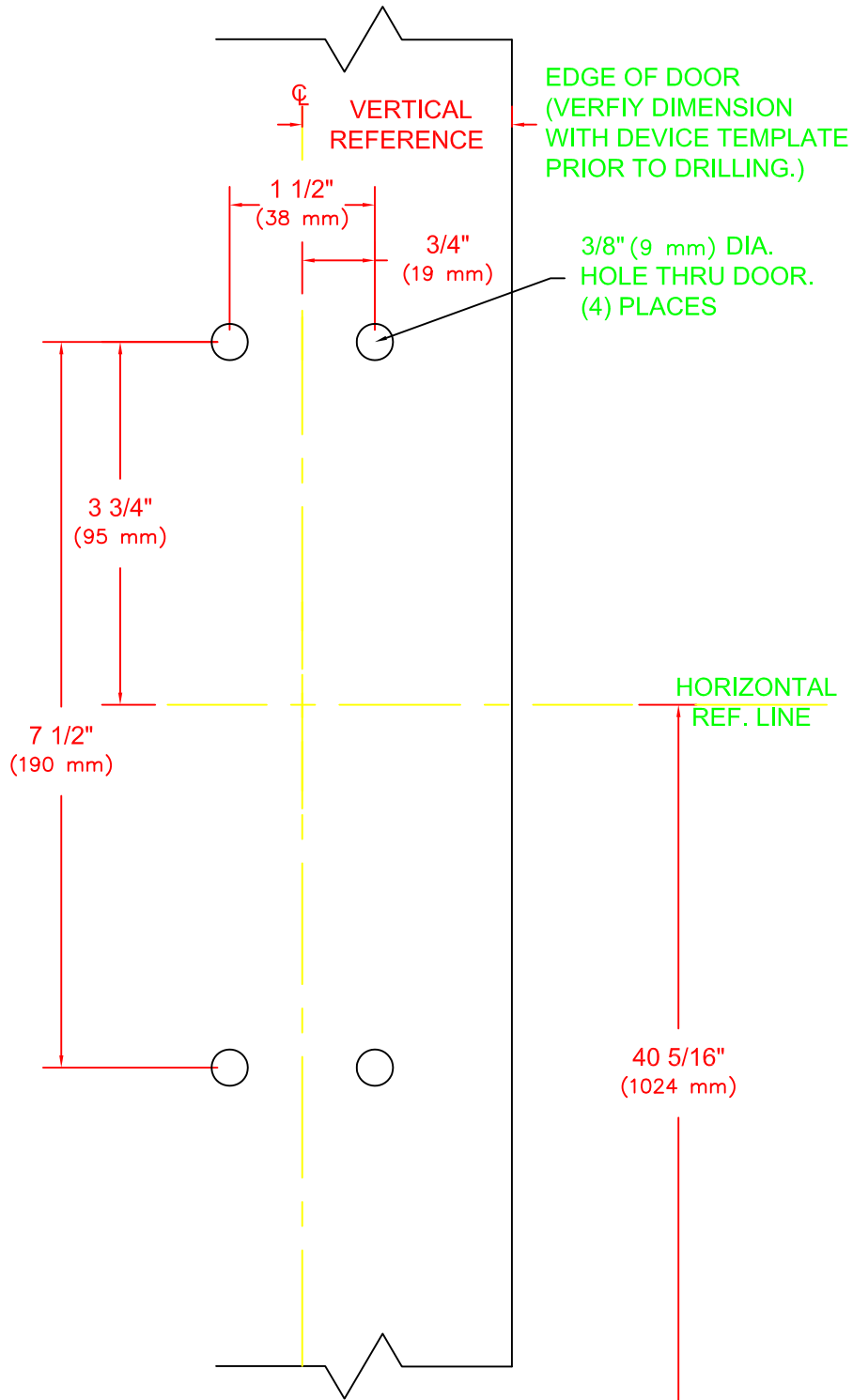
DATE: 1-24-14



9100 & F9100 x YODT, Y\*02R  
Note; \* Denotes all Lever Design Styles  
VERTICAL ROD EXIT DEVICE

TEMPLATE NUMBER  
T-9101 (3)

RHR SHOWN  
LHR OPPOSITE



NOTES:

1. SEE MASTER SHEET FINISHED FLOOR LINE OR TOP OF THRESHOLD
- #T-0001 FOR SUGGESTED DOOR REINFORCEMENT.
2. SEE ADDITIONAL DEVICE TEMPLATE WHEN REQUIRED.
3. TRIM WILL COVER STANDARD SDI CUTOUT.

REV. No. 3

REVISION: Lever Style Notes

DATE: 1-16-14



YODT, Y\*02R

Note; \* Denotes all Lever Design Styles

TEMPLATE NUMBER

T-9000 ③